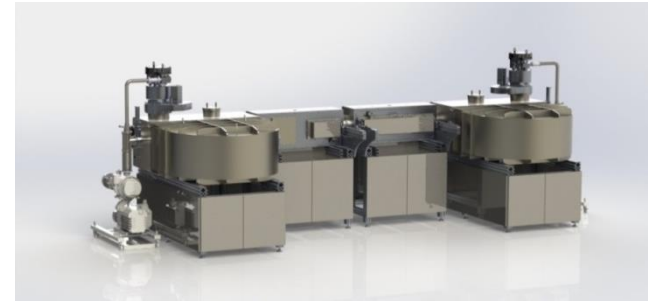
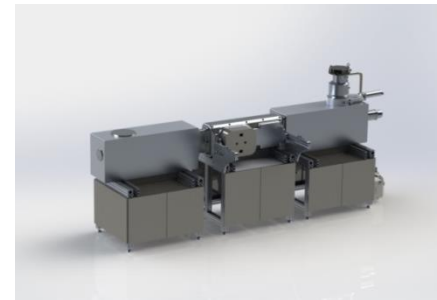


Technical data

	ReelCoater	ReelCoater-R&D
Reel diameter	Up to 1000 mm	Up to 270 mm
Strip speed	0-10 m/min	0-10 m/min
Strips in parallel	Up to 8	1
Coating area width	From 70 mm	From 70 mm
Process modules	1-3 (typically)	1-2 (typically)
Sources per module	Up to 4 small, or 2 large	Up to 4 small or 2 large
Source orientation	Front, back, or both	Front, back, or both
Process options	Sputtering Reactive sputtering Cathodic arc evaporation Plasma etch Substrate bias <i>Other possible</i>	Sputtering Reactive sputtering Cathodic arc evaporation Plasma etch Substrate bias <i>Other possible</i>
Strip types	Plain and stamped, 2 and 3-dimensional, mesh, flex film, etc. Stainless steel, Cu-alloys, aluminum, plastics, etc.	Plain and stamped, 2 and 3-dimensional, mesh, flex film, etc. Stainless steel, Cu-alloys, aluminum, plastics, etc.



ReelCoater system equipped with two process modules.



ReelCoater-R&D system equipped with one process module.